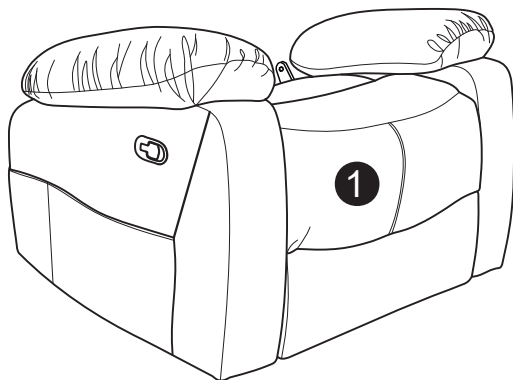


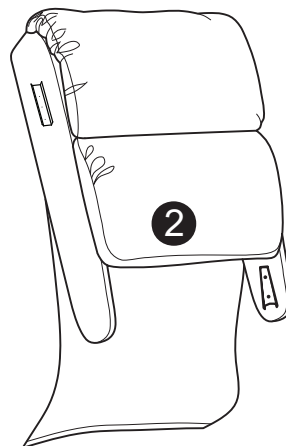
WARNING

- This product has been designed for seating three (3) average adults. To prevent injury and damage to this unit, PROHIBIT jumping on it.
- This product is designed for home use and not intended for commercial use.
- Children under the age of 5, small infants , and babies should not sit, play or sleep alone unattended by an adult on this product for safety reasons.
- Recommended # of people needed for handling: 2 (however it is always better to have an extra hand.)
- THIS INSTRUCTION BOOKLET CONTAINS **IMPORTANT** SAFETY INFORMATION. PLEASE READ AND KEEP IT FOR FUTURE REFERENCE.

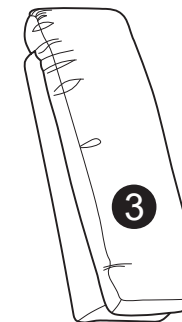
PARTS



Seat Body
QTY:1



Backrest
QTY:1



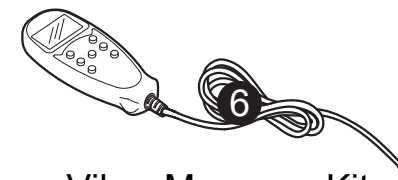
Left Facing Backrest Ear Piece
QTY:1



Right Facing Backrest Ear Piece
QTY:1

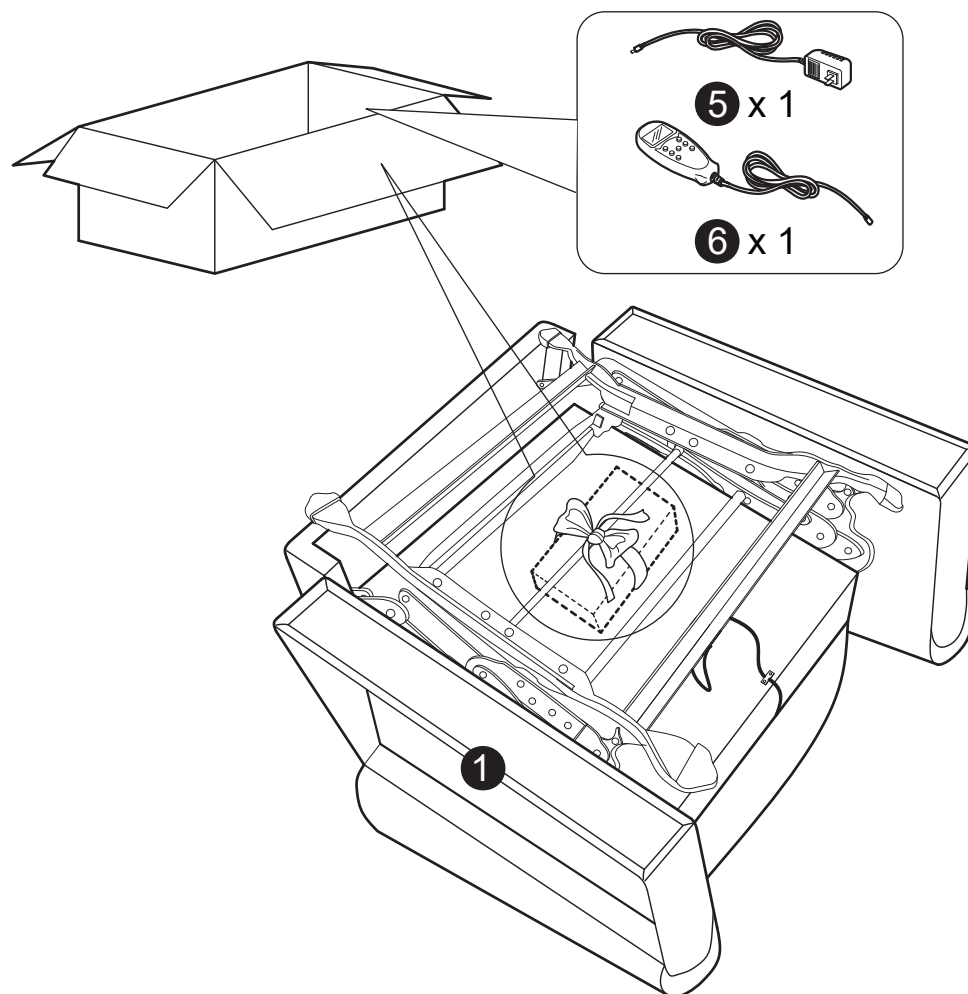
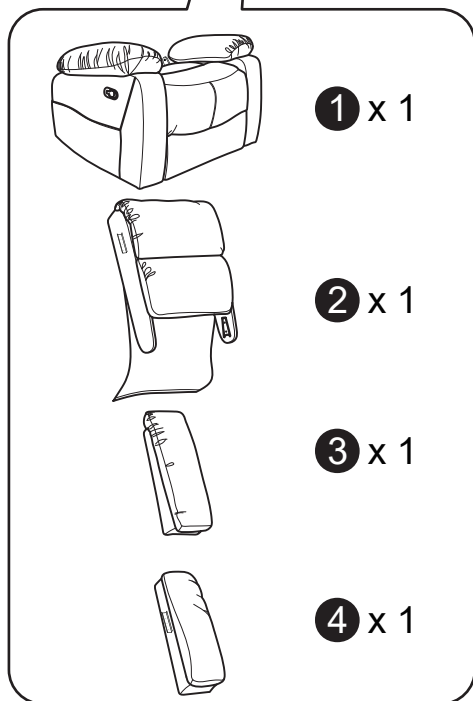
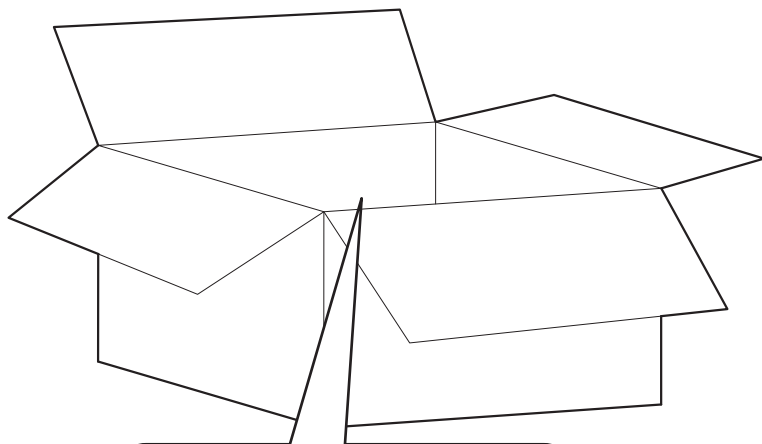


Cable
QTY:1

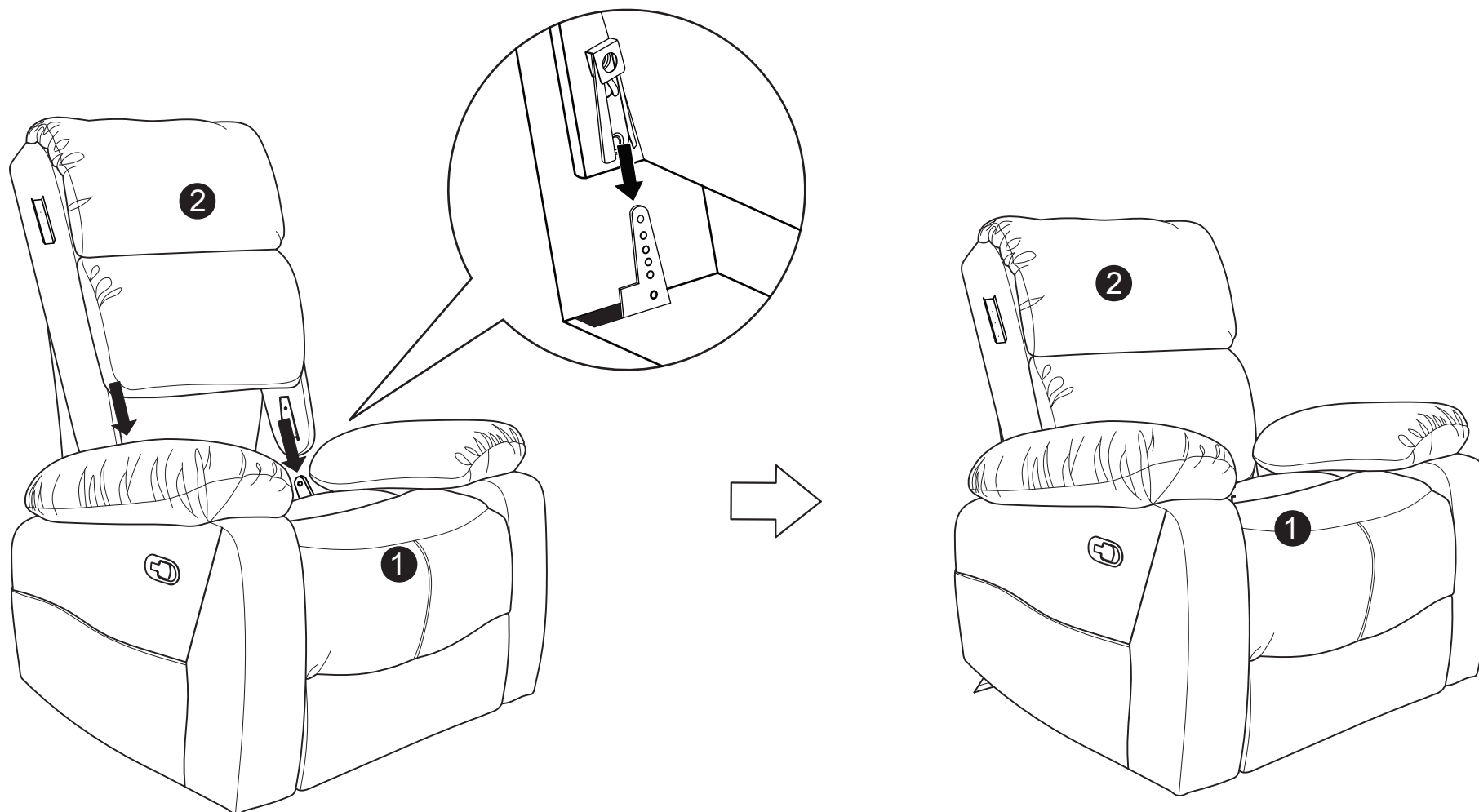


Vibro Massage Kit
QTY:1

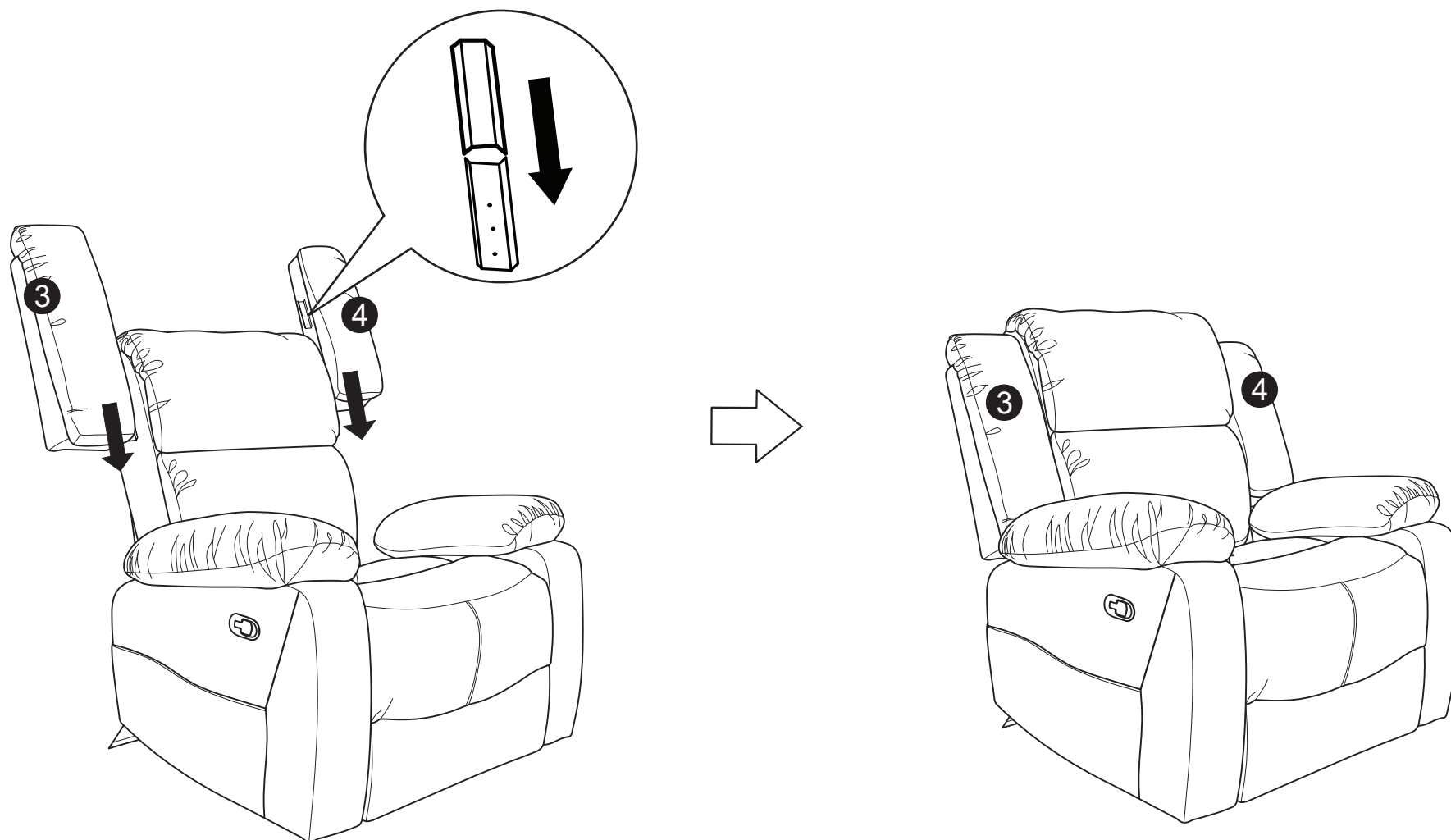
Step 1 :



Step 2 :



Step 3 :



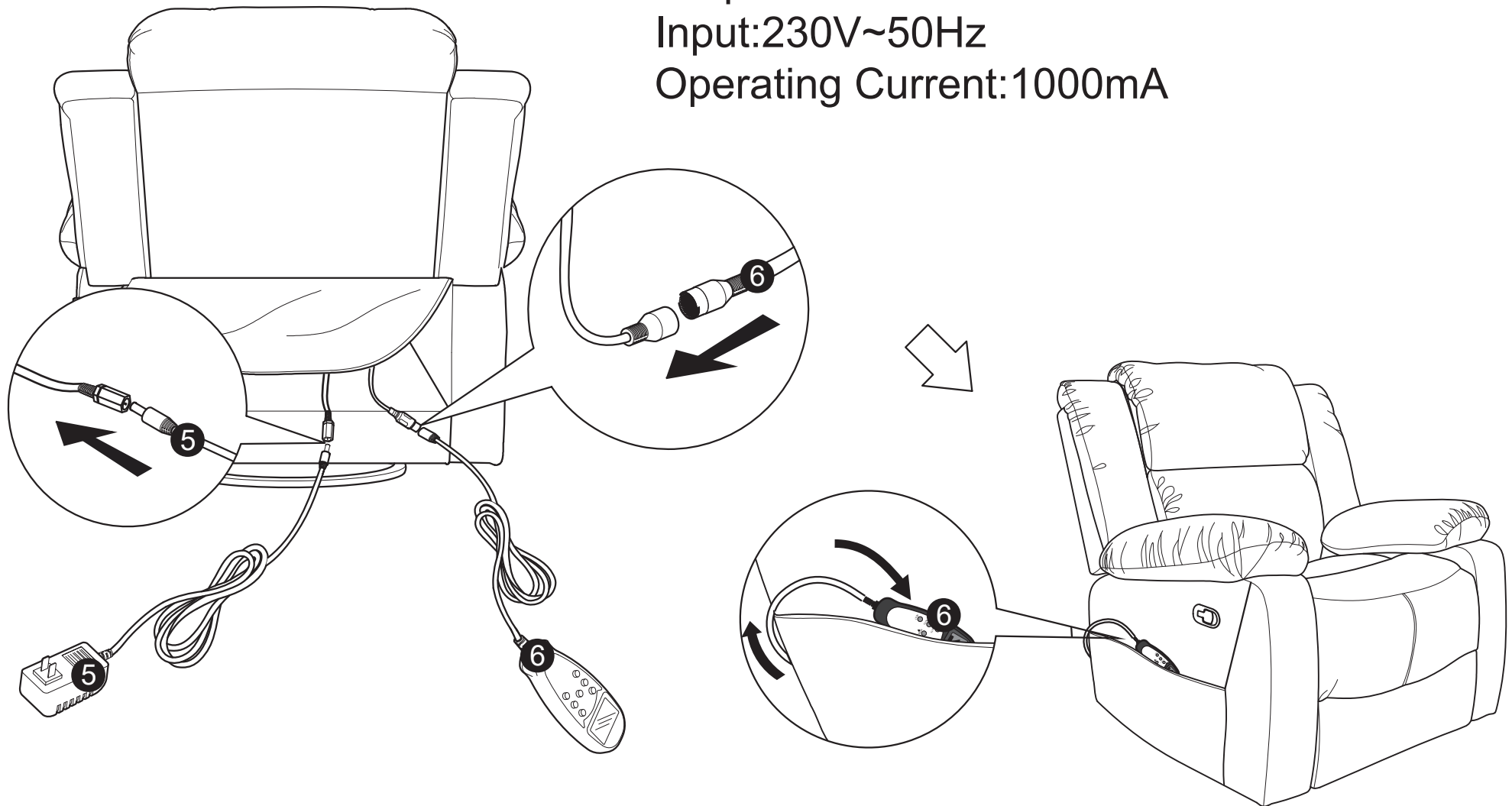
Step 4 :

Technical Parameters

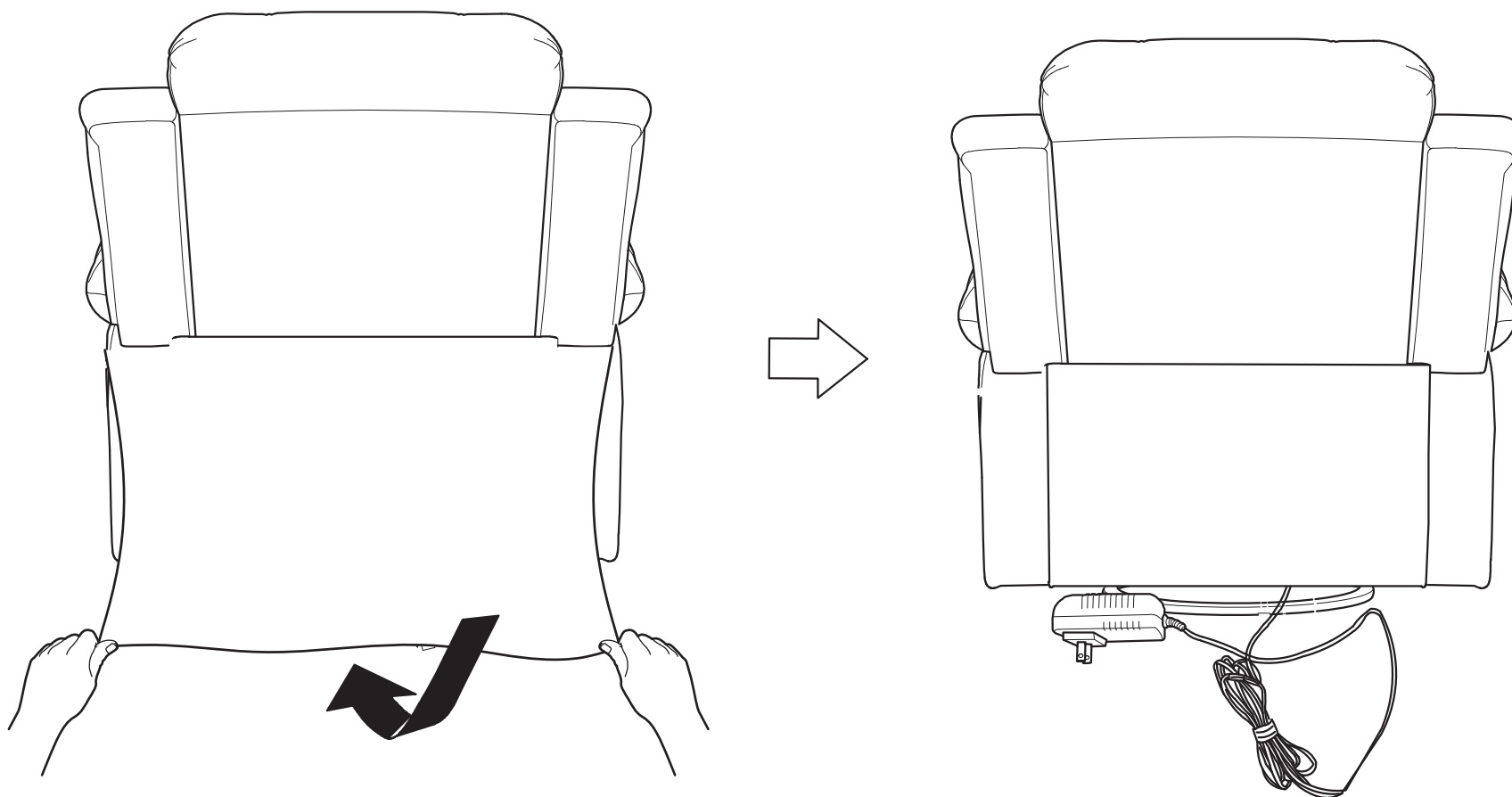
Output:DC12V

Input:230V~50Hz

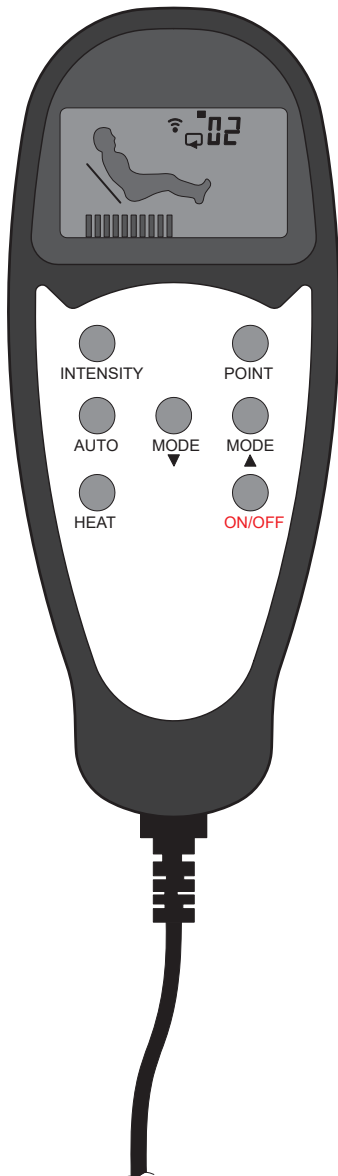
Operating Current:1000mA







Step 5 :



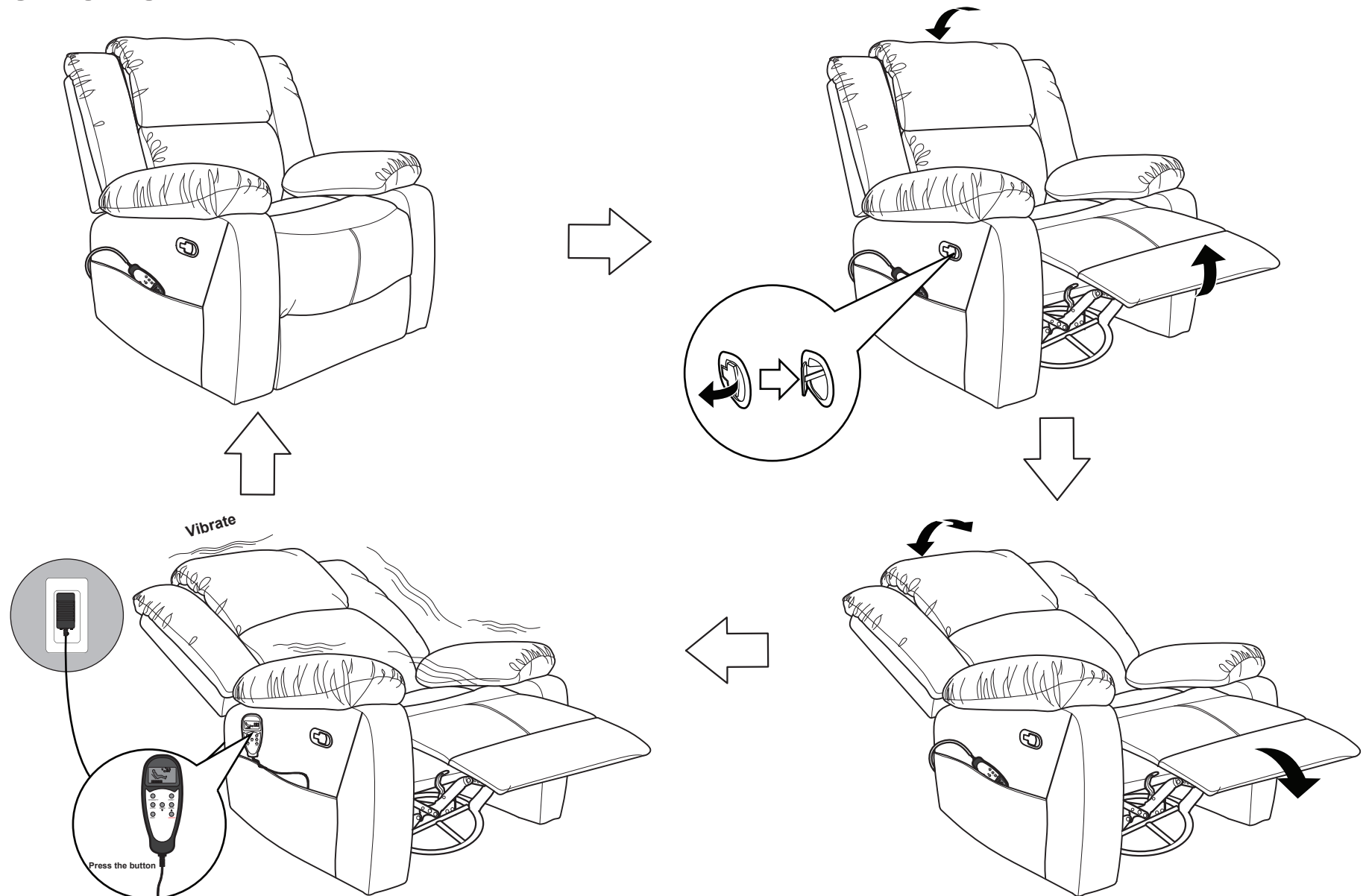
VIBRO MASSAGE KIT MANUAL:



Operation Manual:

- Plug the AC Adapter into a power supply and input the DC end to the outlet of controller.
- Press ON/OFF to startup massage kit. It runs from mode 1st to 10th in automatic style(signal  be on, each mode switch to next mode per 1 minute). Default timer is 15 minutes, default intensity is in grade 5. Press ON/OFF again to stop work.
- Press INTENSITY to choose massage intensity, the signal  will be indicated more until full, totally 10 grades.
- Press AUTO to set automatic mode circle, and press again to get manual style (signal  lamp will be off),and you can choose ten massage modes.
- Press MODE Δ /MODE ∇ to Select different manual vibration mode(signal  lamp will be off), totally 10 styles.
- Press POINT . Select the number of vibrating motors. Press the button once, the first set of motors will work and the second set of motors will shut down. Press again, the first set of motors will shut down and the second set of motors will work..
- Press HEAT , the heating function will be on.

FUNCTIONS :



FCC INSTRUCTION :

Caution: modifications not approved by the party responsible for compliance could void user's authority to operate the equipment.

The following statement or equivalent:

"NOTE: This equipment has been tested and found to comply with the limits for a Class B digital device, pursuant to Part 15 of the FCC Rules. These limits are designed to provide reasonable protection against harmful interference in a residential installation. This equipment generates, uses and can radiate radio frequency energy and, if not installed and used in accordance with the instructions, may cause harmful interference to radio communications. However, there is no guarantee that interference will not occur in a particular installation. If this equipment does cause harmful interference to radio or television reception, which can be determined by turning the equipment off and on, the user is encouraged to try to correct the interference by one or more of the following measures:

- Reorient or relocate the receiving antenna.
- Increase the separation between the equipment and receiver.
- Connect the equipment into an outlet on a circuit different from that to which the receiver is connected.
- Consult the dealer or an experienced radio/TV technician for help."

Need assistance?

Please call :

866-626-7826

For prompt, reliable service; please have your assembly manual ready.